

MARKET SQUARE

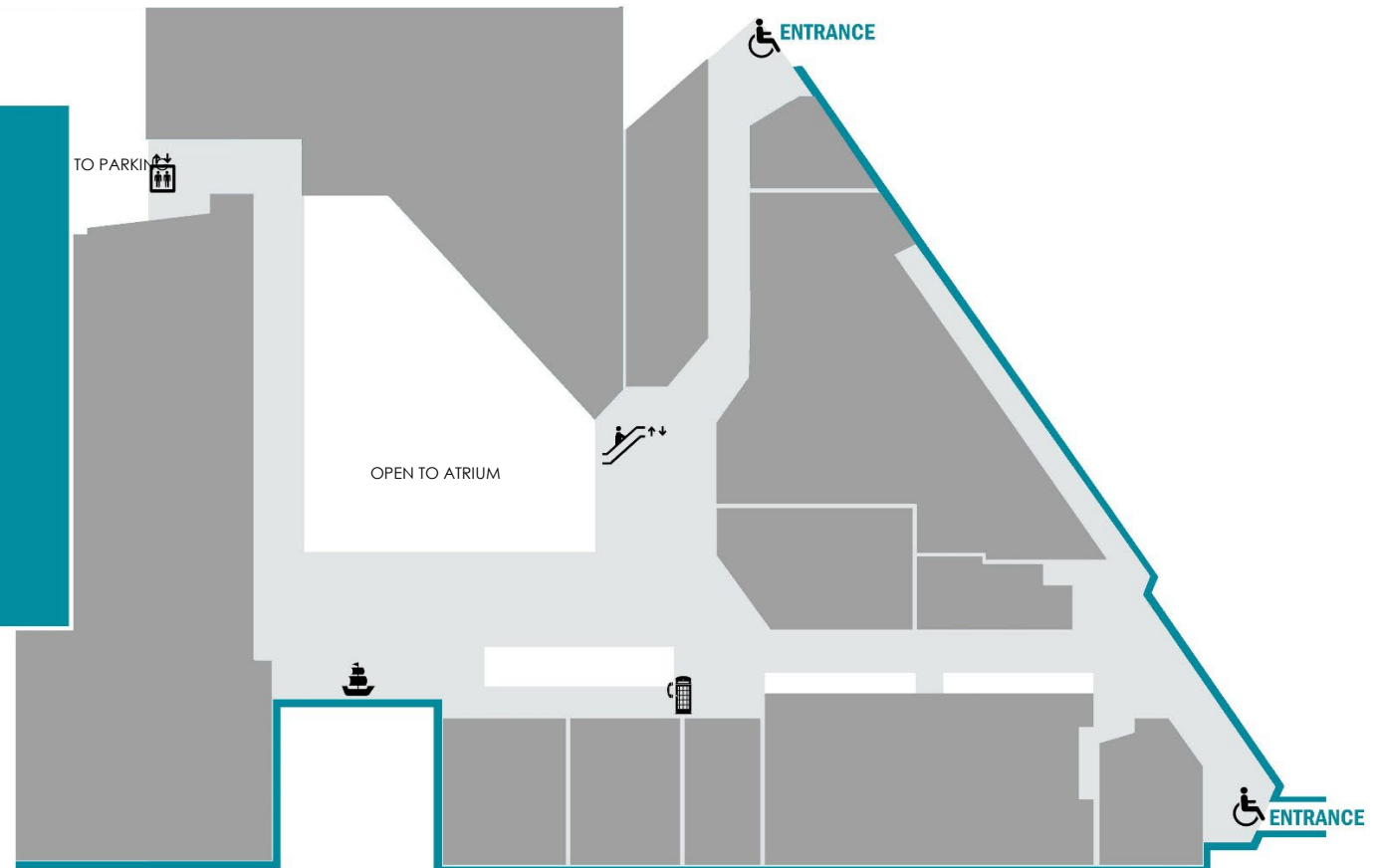
LEASING OPPORTUNITY: UNIT W201 | 7,400 SF | WATERSIDE OFFICES

OFFICE SPACE WITH VIEWS TOWARDS THE HARBOUR

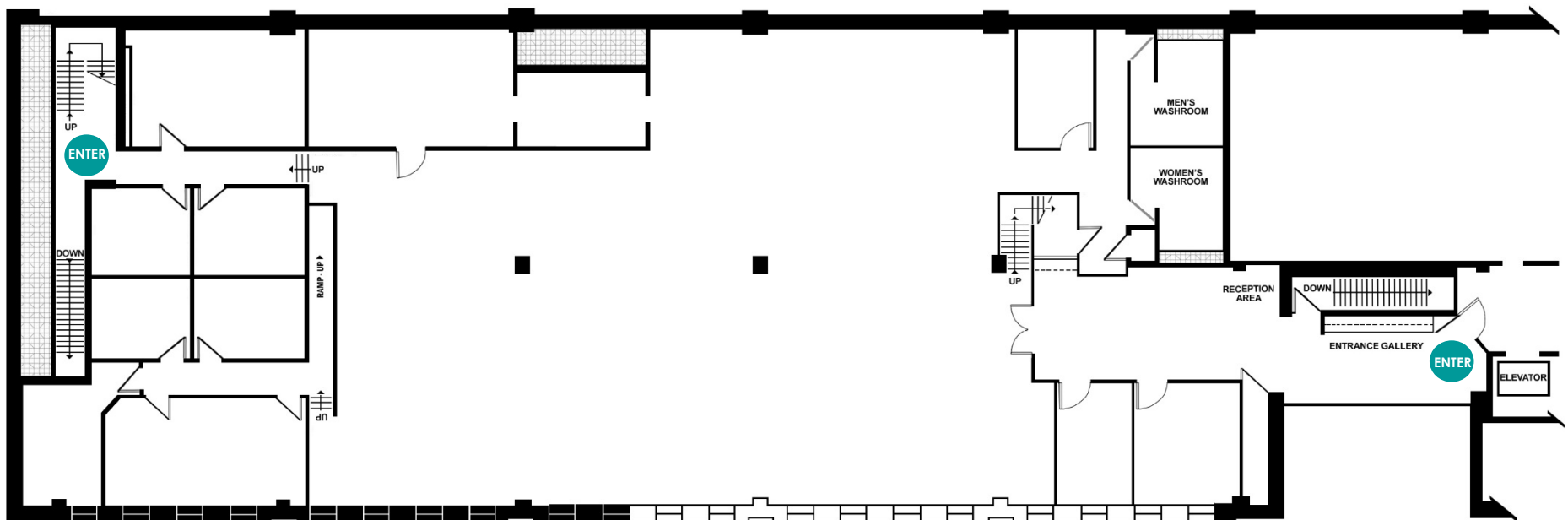
UNIT 201

LOCATION & ACCESS

Unit W201 overlooks Smythe Street and is positioned near the waterfront, the Trade Centre, Hilton Hotel and the Harbour Passage. The space is accessed by a dedicated stairwell and elevator located next to the Convention Centre lobby. Access to Unit W201 is available 24/7.



FLOORPLAN: UNIT W201 | 7,400 SF



AVAILABLE FOR IMMEDIATE OCCUPANCY

- This space is a blank slate to make your business vision come to life!
- Windows with views towards the harbour.
- High-profile interior and exterior branding opportunities.
- Entrance located in the Trade Centre lobby.
- Access to this space is available 24/7.
- Climate-controlled, indoor parking available.
- Onsite amenities for your team – shops, dining and services